

# Sustainability

## Our strategy and approach

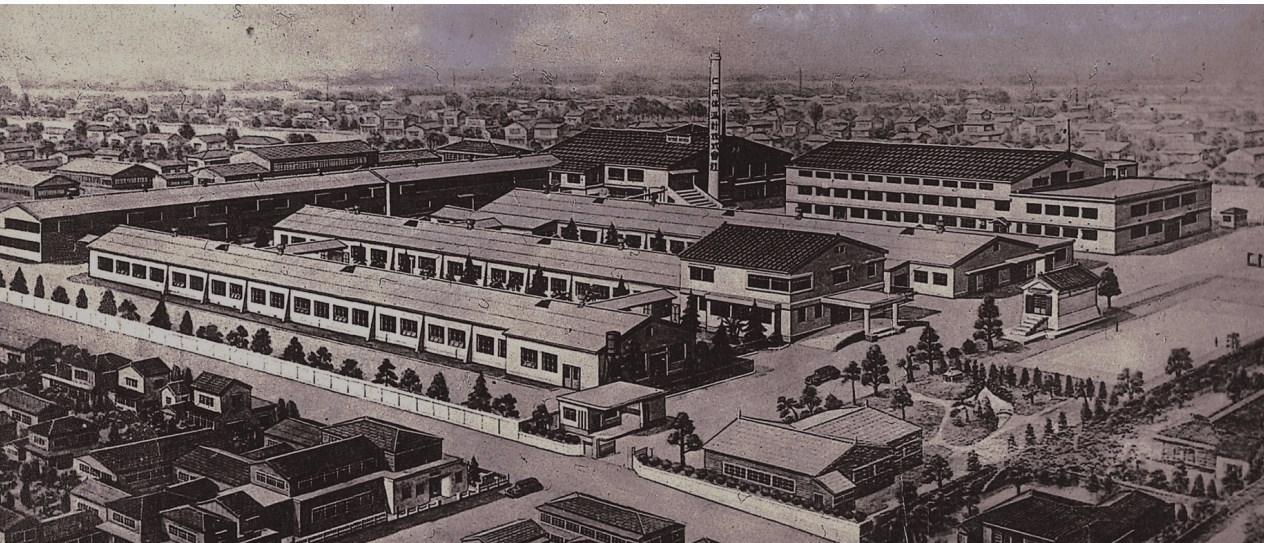
Our sustainability framework supports seven priorities aimed at creating social value by advancing healthcare and enhancing patient quality of life while supporting environmental goals.



# Building on a **100-year-old legacy**

Terumo Blood and Cell Technologies is part of [Terumo Corporation](#). Based in Tokyo, Terumo Corporation has been a healthcare innovator for more than 100 years, since its founding in 1921, and pursues a group mission of Contributing to Society through Healthcare.

The [three companies](#) comprising Terumo Corporation are committed to a singular [corporate purpose](#): to enhance treatment outcomes, ease patient burdens, and deliver solutions to help solve a wide range of issues in medical settings. This extends to addressing issues important to society at large, including human rights and the environment.



Terumo Corporation 1921

At Terumo Blood and Cell Technologies, we are proud to be part of this legacy and to align our company with Terumo Corporation’s purpose, mission, and [sustainability strategy](#). We build on this heritage with [our promise](#) of unlocking the potential of blood and cells, technology, and data to improve patient outcomes and serve unmet medical needs.



Terumo founders developed the first clinical thermometer in Japan

# Managing corporate **sustainability**

As part of developing a focused, impactful corporate sustainability framework, both Terumo Corporation and Terumo Blood and Cell Technologies have formed sustainability teams that work to ensure their sustainability and environmental, social, and governance (ESG) strategies continue to evolve and support the creation of social value (CSV).

Terumo Corporation’s sustainability initiatives are managed by the Sustainability team and the Environmental, Health, and Safety team. Together, these teams develop actions, policies, and priorities related to sustainability, including CSV and ESG, and disseminate them throughout the group companies. They are also charged with monitoring progress, tracking key performance indicators, and reporting findings to the group’s executive management and board of directors — who share this feedback to improve future efforts.

Terumo Blood and Cell Technologies established its own ESG and Sustainability team in November 2023. It is supported by a cross-functional Advisory Committee to ensure that our sustainability work supports business imperatives. Senior leadership is updated and engaged on sustainability topics as appropriate.





# Looking to **core values** to support **social value** creation

The group's core values drive our work, our culture, and our business decisions while laying a foundation for our wider sustainability efforts.

## **Core values**

**Respect** – Appreciative of others

**Integrity** – Guided by our mission

**Care** – Empathetic to patients

**Quality** – Committed to excellence

**Creativity** – Striving for innovation

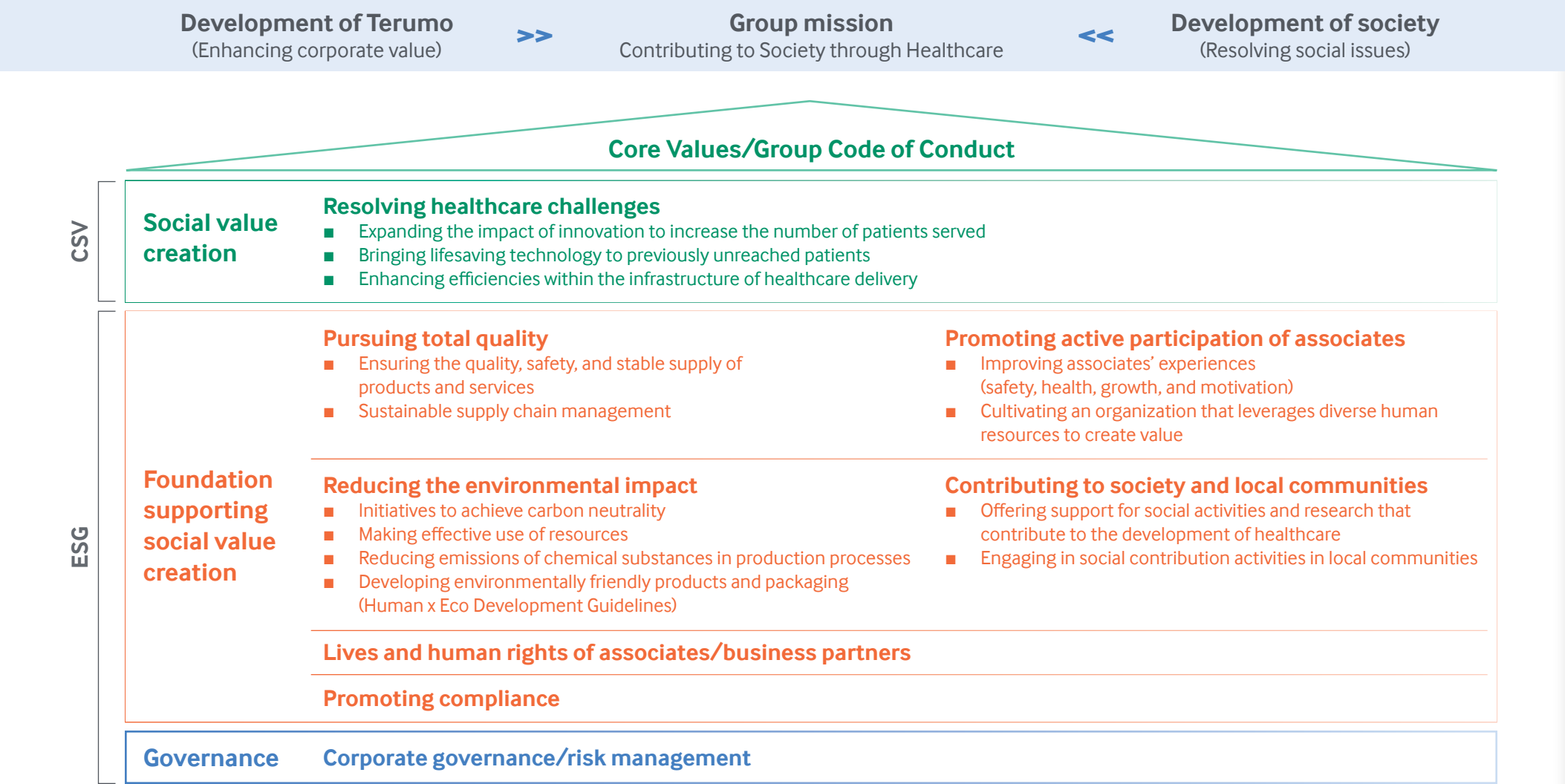




# Setting sustainability priorities and goals

The Terumo Corporation has identified seven sustainability priorities for itself and its companies. These are classified into the categories of **creating social value** and **foundation supporting social value creation**, which encompasses ESG priorities.

## Objectives/Goals of Activities



Within the CSV category, Terumo Blood and Cell Technologies has defined **resolving healthcare challenges** as a significant sustainability priority. Under this umbrella, we strive toward three specific goals:

1

Expanding the impact of innovation to increase the number of patients served

2

Bringing lifesaving technology to previously unreachable patients

3

Enhancing efficiencies within the infrastructure of healthcare delivery

Bola Jibodu  
Patient with sickle cell disease



In addition, the group and our company work toward achieving seven priorities under the ESG umbrella:



Recognizing that environmental and social issues require a collaborative approach, Terumo Corporation and Terumo Blood and Cell Technologies have also committed to pursuing important global initiatives, such as the [Science Based Targets Initiative](#) and the [United Nations Global Compact](#).

Working to reduce the environmental impact associated with our business, Terumo Blood and Cell Technologies has adopted the Terumo Corporation’s ambitious targets related to our emissions, water use, and waste generated.

**Emissions Targets:**

**Terumo Group’s Greenhouse Gas (GHG) Emissions Reduction Targets**

- Scope 1 and 2\***
- Reduce absolute GHG emissions by 50.4% by 2030 compared to 2018
  - Increase the renewable electricity use ratio to 50% by 2030
  - Achieve carbon neutrality by 2040
- Scope 3**
- Reduce GHG emissions 60% per unit of revenue by 2030 from a 2018 base year



\*Scope: Reporting is based on the following GHG Protocol categories:

Scope 1: Direct GHG emissions by the company (e.g., fuel combustion)

Scope 2: Indirect GHG emissions from energy production such as purchased electricity (e.g., GHG emissions from electric companies)

Scope 3: Other indirect GHG emissions (emissions from other companies in raw material production, transportation, disposal, and other activities related to the companies’ business operations)

**Waste Targets:**

Achieve a 90% or greater recycling rate at manufacturing locations by fiscal year 2030

**90%** or greater recycling rate

**Water Use Targets:**

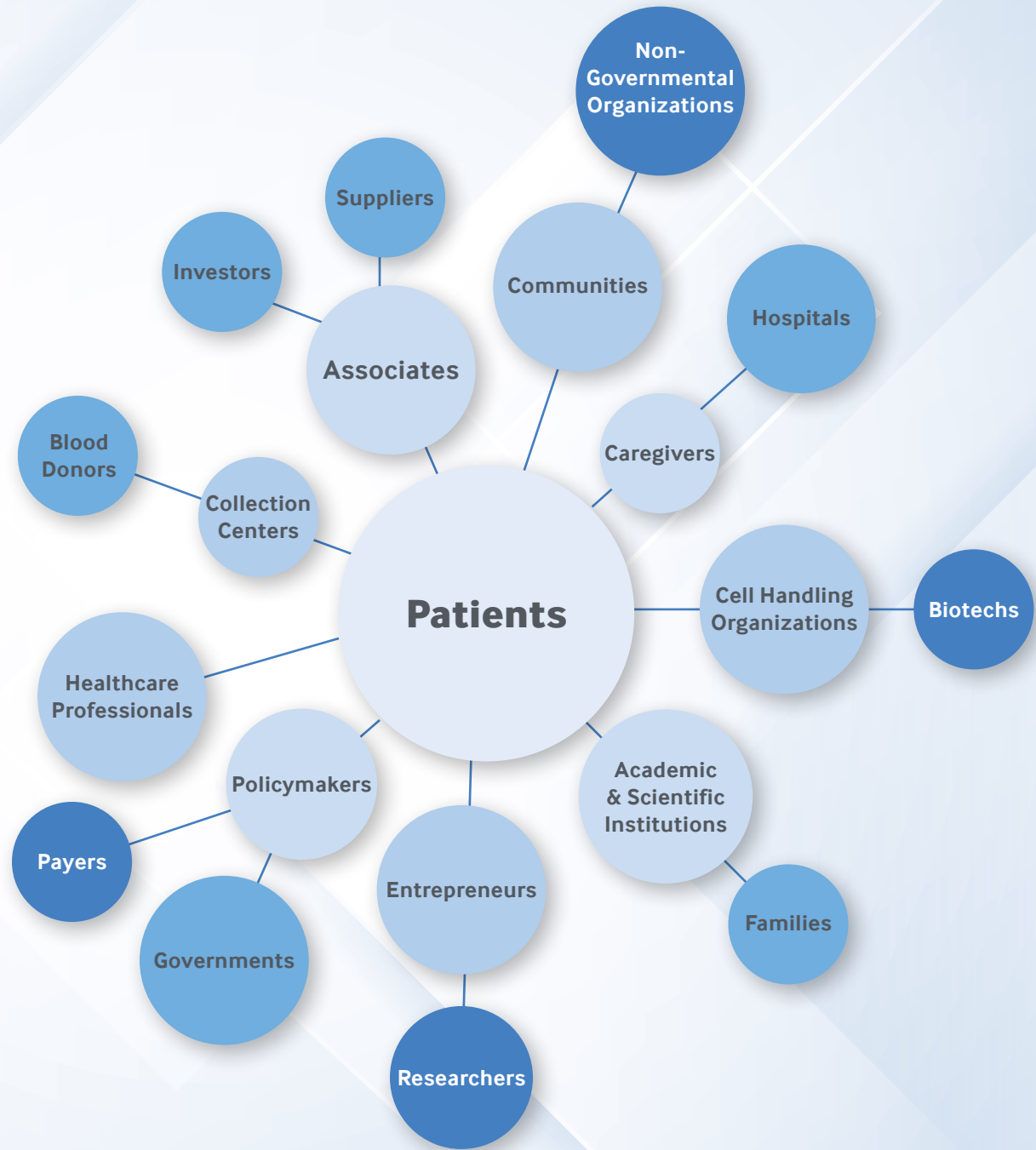
Achieve a 20% or greater reduction in water use per unit of revenue by fiscal year 2030

**20%** or more water use reduction



# Listening to stakeholder perspectives

Engaging internal and external stakeholders (including patients, customers, associates, communities, governments, regulators, and suppliers) is a critical element of our sustainability management approach. Stakeholder perspectives are essential to ensuring that we are meeting our commitment to Contributing to Society through Healthcare. That is why, in fiscal year 2024, we will engage stakeholders as part of a double materiality assessment to incorporate their perspectives into our sustainability strategy.



# Continuing to **evolve** our **sustainability** strategy

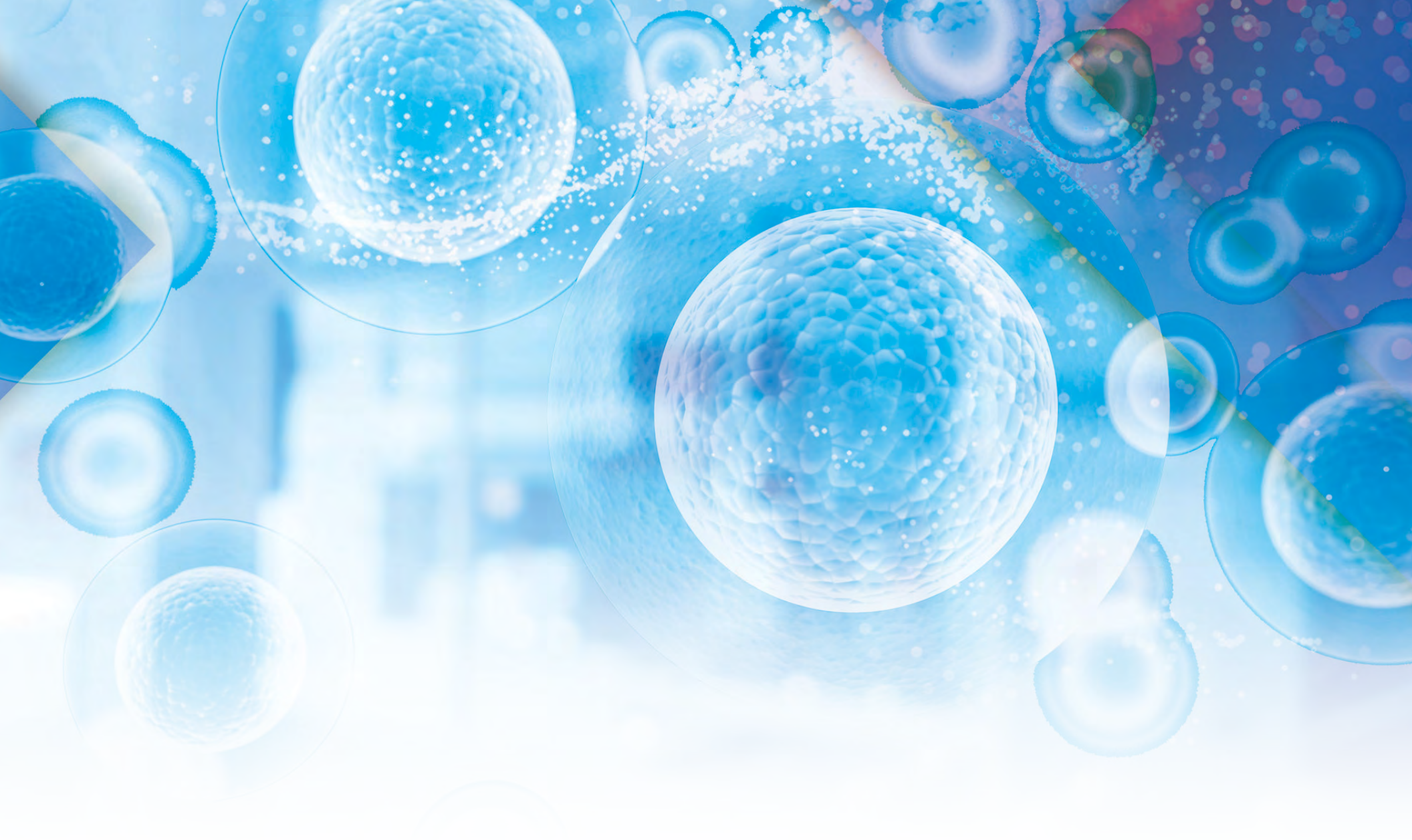
Terumo Blood and Cell Technologies pledges to continue evolving our sustainability strategy and building site-level goals and targets around our priority areas. We are committed to reducing our environmental impacts across our manufacturing sites, including increasing our understanding of our Scope 3 emissions to identify hot spots and areas of opportunity. We will continue moving forward to resolve healthcare challenges with an ever-vigilant eye on pursuing total quality and contributing to associate lives, the communities we serve, and society at large.

To learn more about how we are addressing our sustainability priorities, visit our web page and download additional fact sheets:

- Sustainability home page
- Environmental achievements and initiatives
- Diversity, equity, and inclusion
- Contributing to community







Terumo BCT, Inc.  
Lakewood, CO, USA  
+1.303.231.4357

Terumo BCT Europe N.V.  
Zaventem, Belgium  
+32.2.715.0590

Terumo BCT Asia Pte. Ltd.  
Singapore  
+65.6715.3778

Terumo BCT Latin America S.A.  
Buenos Aires, Argentina  
+54.11.5530.5200

Terumo BCT Japan, Inc.  
Tokyo, Japan  
+81.3.6743.7890